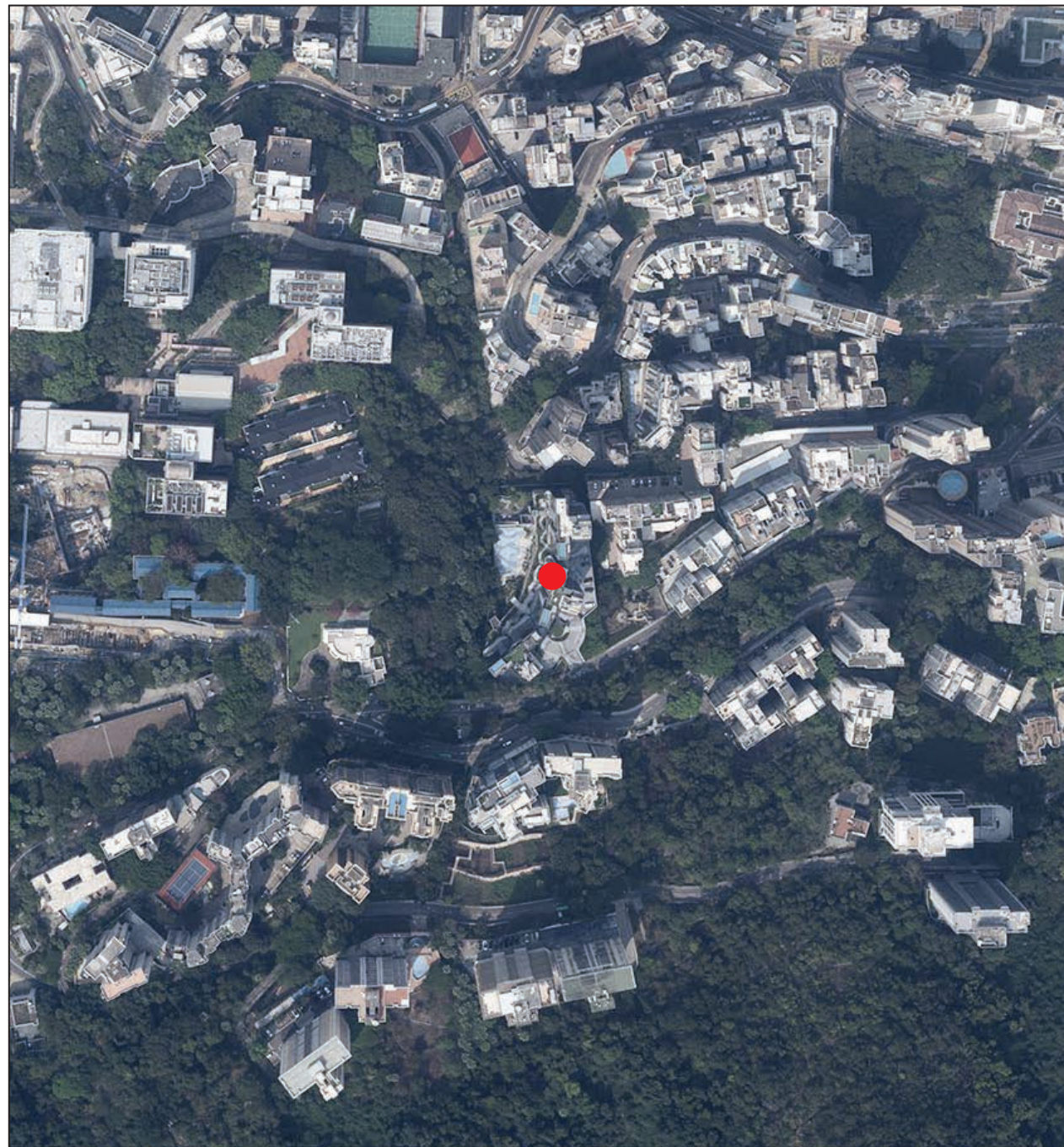


## 8. AERIAL PHOTOGRAPH OF THE DEVELOPMENT

### 發展項目的鳥瞰照片



● Location of the Development  
發展項目的位置

#### Notes:

1. Copy of the Aerial Photograph of the Development is available for free inspection at the sales office of the Development during opening hours.
2. The Aerial Photograph may show more than the area required under the Residential Properties (First-hand Sales) Ordinance due to the technical reason that the boundary of the Development is irregular.
3. The Vendor advises prospective purchasers to conduct an on-site visit for a better understanding of the Development site, its surrounding environment and the public facilities nearby.

Extracted from part of the aerial photograph taken by the Survey and Mapping Office of the Lands Department at a flying height of 6,000 feet, photo No. E218925C, date of flight: 8<sup>th</sup> March 2024.

摘錄自地政總署測繪處在6,000呎的飛行高度拍攝之鳥瞰照片，照片編號E218925C，飛行日期：2024年3月8日。

Survey and Mapping Office, Lands Department, The Government of HKSAR © Copyright reserved -reproduction by permission only.

香港特別行政區政府地政總署測繪處 © 版權所有，未經許可，不得複製。

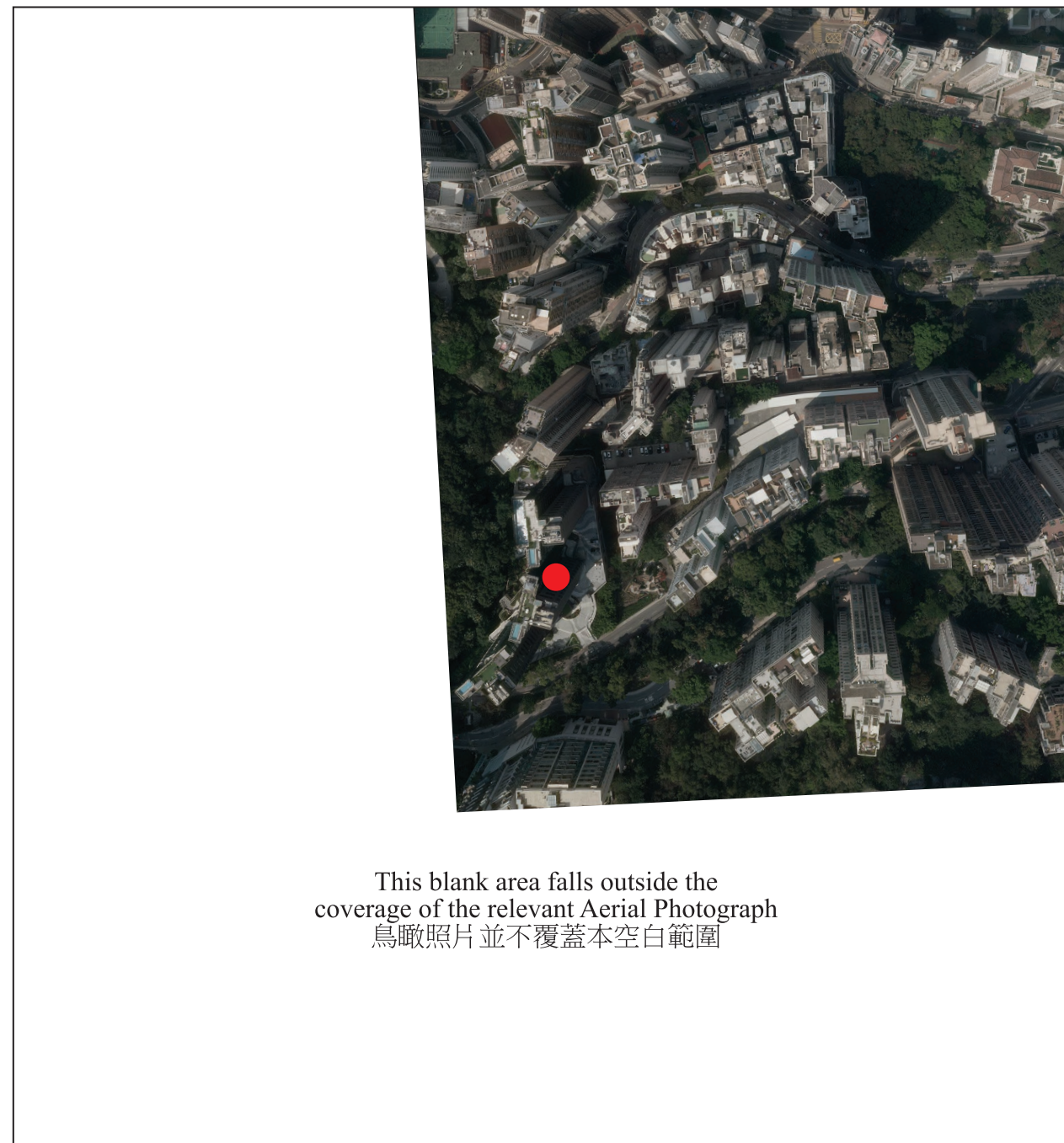
#### 備註：

1. 發展項目的鳥瞰照片之副本可在發展項目的售樓處於開放時間內免費查閱。
2. 由於發展項目的邊界不規則的技術原因，此鳥瞰照片所顯示的範圍可能超過《一手住宅物業銷售條例》所規定的範圍。
3. 賣方建議準買家到有關發展地盤實地考察，以對該發展地盤，其周邊地區環境及附近的公共設施有較佳了解。



## 8. AERIAL PHOTOGRAPH OF THE DEVELOPMENT

### 發展項目的鳥瞰照片



● Location of the Development  
發展項目的位置

#### Notes:

1. Copy of the Aerial Photograph of the Development is available for free inspection at the sales office of the Development during opening hours.
2. The Aerial Photograph may show more than the area required under the Residential Properties (First-hand Sales) Ordinance due to the technical reason that the boundary of the Development is irregular.
3. The Vendor advises prospective purchasers to conduct an on-site visit for a better understanding of the Development site, its surrounding environment and the public facilities nearby.

Extracted from part of the aerial photograph taken by the Survey and Mapping Office of the Lands Department at a flying height of 2,000 feet, photo No. E221872C, date of flight: 20<sup>th</sup> March 2024.

摘錄自地政總署測繪處在2,000呎的飛行高度拍攝之鳥瞰照片，照片編號E221872C，飛行日期：2024年3月20日。

Survey and Mapping Office, Lands Department, The Government of HKSAR © Copyright reserved -reproduction by permission only.

香港特別行政區政府地政總署測繪處 © 版權所有，未經許可，不得複製。

#### 備註：

1. 發展項目的鳥瞰照片之副本可在發展項目的售樓處於開放時間內免費查閱。
2. 由於發展項目的邊界不規則的技術原因，此鳥瞰照片所顯示的範圍可能超過《一手住宅物業銷售條例》所規定的範圍。
3. 賣方建議準買家到有關發展地盤實地考察，以對該發展地盤，其周邊地區環境及附近的公共設施有較佳了解。

## 8. AERIAL PHOTOGRAPH OF THE DEVELOPMENT

### 發展項目的鳥瞰照片



This blank area falls outside the  
coverage of the relevant Aerial Photograph  
鳥瞰照片並不覆蓋本空白範圍

Extracted from part of the aerial photograph taken by the Survey and Mapping Office of the Lands Department at a flying height of 2,000 feet, photo No. E221871C, date of flight: 20<sup>th</sup> March 2024.

摘錄自地政總署測繪處在2,000呎的飛行高度拍攝之鳥瞰照片，照片編號E221871C，飛行日期：2024年3月20日。

Survey and Mapping Office, Lands Department, The Government of HKSAR © Copyright reserved -reproduction by permission only.

香港特別行政區政府地政總署測繪處 © 版權所有，未經許可，不得複製。

● Location of the Development  
發展項目的位置

#### Notes:

1. Copy of the Aerial Photograph of the Development is available for free inspection at the sales office of the Development during opening hours.
2. The Aerial Photograph may show more than the area required under the Residential Properties (First-hand Sales) Ordinance due to the technical reason that the boundary of the Development is irregular.
3. The Vendor advises prospective purchasers to conduct an on-site visit for a better understanding of the Development site, its surrounding environment and the public facilities nearby.

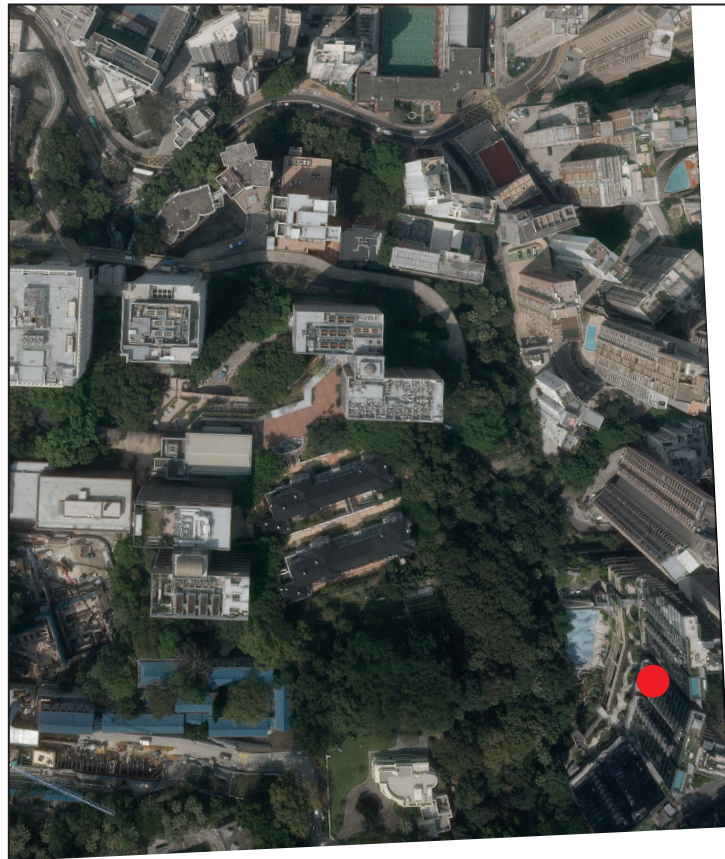
#### 備註：

1. 發展項目的鳥瞰照片之副本可在發展項目的售樓處於開放時間內免費查閱。
2. 由於發展項目的邊界不規則的技術原因，此鳥瞰照片所顯示的範圍可能超過《一手住宅物業銷售條例》所規定的範圍。
3. 賣方建議準買家到有關發展地盤實地考察，以對該發展地盤，其周邊地區環境及附近的公共設施有較佳了解。



## 8. AERIAL PHOTOGRAPH OF THE DEVELOPMENT

### 發展項目的鳥瞰照片



This blank area falls outside the  
coverage of the relevant Aerial Photograph  
鳥瞰照片並不覆蓋本空白範圍

● Location of the Development  
發展項目的位置

#### Notes:

1. Copy of the Aerial Photograph of the Development is available for free inspection at the sales office of the Development during opening hours.
2. The Aerial Photograph may show more than the area required under the Residential Properties (First-hand Sales) Ordinance due to the technical reason that the boundary of the Development is irregular.
3. The Vendor advises prospective purchasers to conduct an on-site visit for a better understanding of the Development site, its surrounding environment and the public facilities nearby.

Extracted from part of the aerial photograph taken by the Survey and Mapping Office of the Lands Department at a flying height of 2,000 feet, photo No. E221870C, date of flight: 20<sup>th</sup> March 2024.

摘錄自地政總署測繪處在2,000呎的飛行高度拍攝之鳥瞰照片，照片編號E221870C，飛行日期：2024年3月20日。

Survey and Mapping Office, Lands Department, The Government of HKSAR © Copyright reserved -reproduction by permission only.

香港特別行政區政府地政總署測繪處 © 版權所有，未經許可，不得複製。

#### 備註：

1. 發展項目的鳥瞰照片之副本可在發展項目的售樓處於開放時間內免費查閱。
2. 由於發展項目的邊界不規則的技術原因，此鳥瞰照片所顯示的範圍可能超過《一手住宅物業銷售條例》所規定的範圍。
3. 賣方建議準買家到有關發展地盤實地考察，以對該發展地盤，其周邊地區環境及附近的公共設施有較佳了解。